

## ■ Instruction Manual

■ ■ Read instruction manual  
carefully before using

## Cassette Cooker



Model: NGS-08

### ⚠ WARNING FIRE OR EXPLOSION HAZARD

If you smell gas:

1. Do not attempt to light appliance.
2. Extinguish any open flame.
3. Disconnect from fuel supply.
4. Evacuate immediately.
5. Allow gas to dissipate 5 minutes before relighting the appliance.

Failure to follow these instructions could result in fire or explosion, which could cause property damage, personal injury, or death.

### FOR YOUR SAFETY

Do not store or use gasoline or other liquids with flammable vapours in the vicinity of this or any other appliance.

### ⚠ DANGER



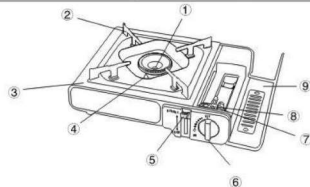
### CARBON MONOXIDE HAZARD

This appliance can produce carbon monoxide which has no odor.

Using it in an enclosed space can kill you.

Never use this appliance in an enclosed space such as a camper, tent, car or home.

## 1、 ALL PARTS OF THE APPLIANCE



- 1 Burner
- 2 Drip-pan
- 3 Body
- 4 Electronic ceramic needle
- 5 Pressure sensor-lock lever
- 6 Switch
- 7 Auto gas shut-off safety device
- 8 Valve
- 9 Side lid

## 2、 SAFETY FUNCTION AND PERFORMANCE

### (1) Auto gas shut-off safety device

When the pressure in the gas cartridge is exceeding its rated pressure, the safety device will take effect to make the gas cartridge apart from the valve, flameout while the airflow is shut-off.

### (2) Pressure sensor-lock lever separating system

The pressure sensor-lock lever can be operated only when the pan-supports of drip-pan faces upwards and the switch is on the "OFF" position.

### (3) Double sealed design in the valve entrance

Double sealed design in the valve entrance can prevent gas leakage when the gas cartridge is connected with the valve.

### (4) The device preventing the gas cartridge connected with the valve incorrectly.

The gas cartridge shall be connected with the valve entrance correctly according to the red color arrowhead on the gas cartridge, the gas cartridge stem shall aim at the valve hole.

### (5) Preventing the drip-pan about-face design.

The appliance can't be operated if the drip-pan is upside-down.

### (6) Changing gas cartridge safety device

The gas cartridge can't be connected with the valve entrance unless the switch is on the "OFF" position.

### (7) Automatic electronic ignition

### (8) The flame is adjustable freely.

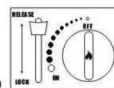
### (9) The vitreous enamel drip-pan isn't easy to be damaged, it also include a cover which protects the flame.

### (10) Light aluminium burner preventing rust, it can be used enduringly.

### (11) Coated body isn't easy to fall off.



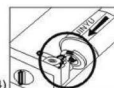
(Picture 1)



(Picture 2)



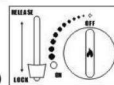
(Picture 3)



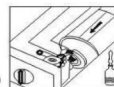
(Picture 4)



(Picture 4a)



(Picture 5)



(Picture 6)



(Picture 7)



(Picture 8)

## 3、 METHOD FOR USE

### (1) Put the drip-pan upward (Picture 1)

### (2) Assure the switch is on the "OFF" position (The flame mark is upward) and the pressure sensor-lock lever is on the "RELEASE" position. (Picture 2)

### (3) Open the side lid. (Put a finger into the side lid hole, open it) (Picture 3)

### (4) Use only Butane gas cartridge, and the red arrowhead on the gas cartridge shall be upward, the gas cartridge stem shall aim at the valve hole. (Picture 4)

### (5) Draw the pressure sensor-lock lever on the "LOCK" position. (Picture 5)

### (6) Check the sealing if it is in good condition before using, don't use the appliance with damaged sealing.

▲ Only use soap-water mixture to find out the gas leakage (Never use a flame). (Picture 6)

▲ Method: put the gas cartridge into the gas container, assure the gas cartridge is connected with the valve correctly (according to the method 4), turn the switch to the "ON" position. Dab the soap-water mixture from the valve entrance to the gas exit (Including the whole valve, brass tube, around the burner), if any one of the phenomenon appears as follows:

1. Some "sh-sh" sound is heard.
2. The smell of leakage gas is smelt.
3. some air bubbles appear.

It shows that the appliance's sealing is damaged, stop using, it shall be sent to the seller or professional repair department to be repaired, then use it again.

### (7) Close the side lid. (Picture 7)

### (8) Turn the switch to the "ON" position counter-clockwise (slowly), unlock the hands when hearing a "hiss" and see flame on the burner. (Picture 8)

▲ Caution: If no fire appears on the burner, turn back the switch clockwise immediately, catch fire repeatedly according to the method 8. If the fire can't be caught after repeating 4-5 times, turn the switch to the "OFF" position, wait 5 (Five) minutes, and repeat above steps.

### (9) Flameout Turn the switch clockwise to the "OFF" position and see the flameout. (Picture 9)

### (10) Lift the pressure sensor-lock lever to the "RELEASE" position after using, open the side lid, take out the gas cartridge then store it.

(Picture 9)



## 4、 CAUTION FOR APPLIANCE

### (1) This appliance is not for household use, only for outdoor use or commercial indoor restaurant use.

### (2) When the appliance is for indoor use, fresh air openings into the building, failure for improper ventilation will cause injury or death.

### (3) Don't use this appliance in the hot sun or under the strong & heated wind. (Picture 10, 11)

### (4) Minimum clearance from combustible walls (indoor U.S. only restaurants). Not for combustible table or floor surfaces. (Picture 12)

### (5) Don't use this appliance under a shelf or at the location where some objects may fall off abruptly.

### (6) Don't use this appliance for drying clothes. (Picture 14)

### (7) Keep the appliance away from the fire and the objects which are easy to catch fire. (Picture 15)

### (8) The pot shall not cover the side lid when using the appliance. (Picture 16) Don't use the appliance to cook food by putting a big pot between two appliances. (Picture 17)

### (9) Don't use this appliance to catch fire.

### (10) Don't use the appliance by putting the tray made of asbestos or ceramic pot on it. (Picture 18)

### (11) Don't use the appliance when the empty pan is on it. (Picture 19)

### (12) The temperature is so high on the appliance surface when it is burning or being used just now, don't touch the appliance (hot surface) with hands. (Picture 20)

### (13) Take out the gas cartridge before checking the appliance.

### (14) Put the pressure sensor-lock lever in the "RELEASE" position after using.

### (15) Use pots no smaller than 6" diameter (150mm).



(Picture 10)



(Picture 11)



(Picture 12)



(Picture 13)



(Picture 14)



(Picture 15)



(Picture 16)



(Picture 17)



(Picture 18)



(Picture 19)



(Picture 20)



(Picture 21)

## 5、 CAUTION FOR GAS CARTRIDGE

### (1) Read the caution printed on the gas cartridge before using.

### (2) Don't put the gas cartridge in the burning sun or near by the fire. (Picture 21) It shall be stored in a shady place.

### (3) Changing of the cartridge must be done outside, far from flames, ignition flames, electrical device and other persons.

### (4) Don't drop the cylinder, leakage may occur.

### (5) Use only 250 gram gas cartridge.

### (6) Don't refill the gas cartridge, it's dangerous.

### (7) Keep the gas cartridge away from the children.

### (8) Gas cartridges can be purchased at most sporting goods and camping stores. Cartridges must be Butane gas, either type 2P or 2Q and approved by specifications required by the U.S. Dept. of Transportation (D.O.T.)

## 6、CLEANING

- (1) Take out the gas cartridge before cleaning the appliance.
- (2) Use damp dishcloth with the cleanser to clean the appliance, then wipe the appliance with a dry dishcloth.
- (3) If the holes around the burner are blocked, use a toothpick to wipe off the dirtiness.
- (4) Clean the gas container inside with the brush.

## 7、STORING

- (1) Clean the appliance before storing it.
- (2) Store the appliance separately with the gas cartridge .
- (3) Store the gas cartridge in the shady place.
- (4) Keep the appliance (including the gas cartridge) away from the children.

## 8、HOW TO DEAL WITH PROBLEMS

### Cause

- (1) The switch isn't on the "OFF" position.
- (2) The pressure sensor–lock lever isn't on the "RELEASE" position.
- (3) The holes around the burner are blocked.
- (4) The electronic ceramic needle is dirty.
- (5) Auto gas shut–off safety device takes effect.
- (6) Gas leakage happens in the valve.
- (7) The gas cartridge is connected with the valve entrance incorrectly.
- (8) The gas cartridge stem doesn't aim at the valve hole in proper alignment.
- (9) Without gas.

### FOR YOUR SAFETY

If you smell gas:  
1.Evacuate enclosure.  
2.Call for professional help.

### FOR YOUR SAFETY

Do not store or use gasoline or other liquids with flammable vapors in the vicinity of this or any other appliance.

This stove is equipped for use with butane gas only. Do not attempt to operate this stove at temperatures below freezing(32 degrees F).

### Solution

- (a) Turn the switch to the "OFF" position.
- (b) Draw the pressure sensor–lock lever to the "RELEASE" position.
- (c) Clean the burner and wipe off the dirtiness.
- (d) Clean out the dirtiness on the electronic ceramic needle.
- (e) Take out the gas cartridge, cool it, then use it again.
- (f) Contact with the seller or professional repair department.
- (g) Connect the gas cartridge with the valve entrance again.
- (h) The gas cartridge stem shall aim at the valve hole, then draw the pressure sensor–lock lever to the "LOCK" position.
- (i) Change the gas cartridge.

CASE	CAUSE..... SOLUTION
Can't put on the gas cartridge	(1) ..... (a) (2) ..... (b) (5) ..... (e)
Can't catch the fire	(2) ..... (b) (3) ..... (c) (4) ..... (d) (5) ..... (e) (8) ..... (h) (9) ..... (i)
Weak fire	(3) ..... (c) (9) ..... (i)
Flameout happens when using the appliance	(5) ..... (e) (9) ..... (i)
Peculiar smell	(6) ..... (f) (7) ..... (g)
Can't draw the pressure sensor–lock lever to the "LOCK" position	(1) ..... (a) (5) ..... (e) (8) ..... (h)

## 9、SPECIFICATION

Product name	cassette cooker
Model	NGS-08
Fuel	Direct pressure butane gas
Rated gas consumption	155g/hr
Thermal flux	2.5 KW
Co content in the fume	<0.03%
Gas pressure in the gas cartridge	<0.4 Mpa
Gas weight in the gas cartridge	220g
Butane gas content in the gas cartridge	95%
External dimension	34.3x28.4x11.3cm
Net weight	3.1lbs(1.4kg)
Gas cartridge	220 gram gas cartridge